

Making Connections

CREC Annual Report 2005-2006

Connecting real services to the needs of our districts



Capitol Region Education Council

Farmington Glastonbury Granby Hartford Hart
Region #10 Rocky Hill Simsbury Somers Southin
Windsor Locks Avon Berlin Bloomfield Bolton B
nfield Farmington Glastonbury Granby Hartfo
Plainville Portland Region #10 Rocky Hill Simsb
Wethersfield Windsor Windsor Locks Avon Berlin
East Windsor Ellington Enfield Farmington Glas
Newington Plainville Portland Region #10 Rocky
Vernon West Hartford Wethersfield Windsor Win
Granby East H nington En
New Britain N Plainville
South Windsor Hartford W
Canton Crom tford East
Manchester N Newington
South Windsor West Hartford W
Canton Crom East Granby East Hartford East
Hartford H and Manchester New Britain New
Somers Southington South Windsor Suffield Ver
Bolton Bristol Canton Cromwell East Granby East
Hartford Hartland Manchester New Britain New
Simsbury Somers Southington South Windsor Su
Bloomfield Bolton Bristol Canton Cromwell East
Farmington Glastonbury Granby Hartford Hartl
Region #10 Rocky Hill Simsbury Somers Southin



Executive Director's Report: 2005-2006



Dr. Bruce E. Douglas

FY 2006 was another one of significant growth and accomplishment for the Capitol Region Education Council. We ended 2005-06 with an operating budget of \$114 million – nearly triple the budget just eight years ago. We employ more than 1,000 people and offer our districts more than 125 programs and services. We reduced Leadership budgets to only 4.5% of CREC's operating budget and our indirect costs to member districts averaged 5.2% compared to the 9.07% approved in FY 2005. Each CREC Division worked to improve and/or expand services and new educational opportunities to our member districts.

Our Division of Student Services has opened the River Street Annex at 627 River Street, in Windsor, that not only provides additional classroom space, but also is the new home of Integrated Program Models (IPM) offices, Children's Therapy Specialists (Sensory Integration Clinic), Autism Outreach Program and Dr. Mark A. Greenstein's Program for the Assessment of Special Children (PASC). In partnership with Soundbridge, the University of Hartford is offering a new professional training program, which will grant a Masters Degree in Aural Habilitation and Education of Hearing-Impaired Children. The School for Young Children on Asylum Hill opened. It is a socially and economically integrated school serving urban and suburban children from birth through kindergarten. The family-centered School provides full-day, full-year programming. It is a state-of-the-art early childhood educational program, designed specifically to meet the needs of young children, with on-site infant and toddler care, resources for parents and early childhood teachers.

The Division of Community Education Training and Employment Services has provided intensive Workforce Development services including the provision of assessment services throughout the region's CT Works Employment Centers; Transition to Employment's expanded English as a Second language Services; Partnership in the Dutch Point revitalization project; Partnership and coordination of the Bridges to Healthcare Initiative with Capitol Community College and Capitol Workforce Partners; Coordination of the regional youth employment program. Professional development highlights include the training of 3,000 educators statewide in adult education, school to career, family literacy and American History initiatives.

The Division of Technical Assistance & Brokering Services (TABS) provided services to 9000 educators in the Greater Hartford region. Additionally, our programs provided training, coaching and technical assistance to an additional 9,100 educators from the Connecticut Technical High School System, Department of Correction, and districts and agencies throughout the state. TABS brokered CREC staff and consultants to help districts meet 1075 of their hard-to-fill staffing needs. We also established a New Administrators' Academy and other professional development opportunities to improve our services to customers. Offerings also included Human Resources audits and training, Virtual High School online classes, an Instructional Coaches Academy, and other teacher and leader partnerships for learning.

The Division of Magnets and Choice Programs served 3,529 students from every CREC member district attending eight interdistrict magnet schools. The Montessori Magnet School won the Magnet Schools of America (MSA) School of Excellence Award and also the Eugene M. Uram School of Merit Award given by MSA to the outstanding public Montessori school of the year. The Metropolitan Learning Center earned for the third year in a row the Magnet Schools of America Magnet School of Distinction Award. This division also managed the state's largest Open Choice program, transporting 1,062 students to 28 districts, as well as the largest number of interdistrict programs, 37 in the state.

Facilities and Operations had another productive year that included supervising the construction of the River Street School Annex; the development of a grant application that doubles the size of the Soundbridge facility; continuing the project management of the East Hartford/Glastonbury Elementary Magnet School that should break ground next summer and the introduction of energy efficient programs to our districts resulting in significant cost savings.

The Division of Teaching and Learning has continued a dynamic partnership with our districts to enhance the use of Classroom Walk Through to gather trend data on student learning. It has built capacity in the areas of language arts/literacy, science and math in order to be responsive to our districts. It also continues to support the districts in the areas of curriculum design, data driven decision making, and differentiated instruction through providing targeted training and implementation coaching.

The Grants Division applied for IRS non-profit 501 (c)(3) status in 2006-2007. This enables CREC to apply for grants to private and corporate foundations who only consider grants submitted from organizations with this IRS status. Our 501 (c)(3) status was approved in March, 2006. Since then, the Development Office of the division has submitted grant applications to foundations using this new IRS status which has resulted in over \$500,000 additional revenue for a variety of CREC programs. This year, the Grants Division also submitted another Teaching American History grant to the U.S. Department of Education. We were awarded a \$1,000,000 grant in 2004 that focused on improving the teaching of American History at the middle school and high school levels. This summer, we were awarded an additional \$1,000,000 Teaching American History Grant to improve how we teach American History on the elementary school level. The first Teaching American History grant has benefited 8 CREC school districts and the CREC magnet schools. The new American History grant will benefit 9 CREC school districts and the CREC magnet Schools.

Technology Services enabled member districts to run their computer systems cost effectively by providing on-demand and full-time outsourced technical expertise; expanded the Microsoft School Agreement, which has saved districts \$1.7 million over the past three years; developed and began offering a comprehensive audit service to help districts best utilize educational technology; and presented an exciting New England-wide conference on educational technology best practices, Beyond Technology: The Bigger Picture, with plans for a follow-up conference in the spring of 2007.

A handwritten signature in black ink that reads "Bruce E. Douglas".

CREC Mission, Vision and Objectives

Mission

To work with boards of education of the Capitol Region to improve the quality of public education for all learners. To achieve its mission, CREC will:

- Promote cooperation and collaboration with local school districts and other organizations committed to the improved quality of public education;
- Provide cost effective services to member districts and clients;
- Listen and respond to client needs for the improved quality of public education, and
- Provide leadership in the region through the quality of its services and its ability to identify and share quality services of its member districts and other organizations committed to public education.

Vision

Every student can and shall learn at high levels and therefore must have access to all educational resources of the region through the system of public schools served by CREC.

Objectives

- To identify the educational needs of CREC member school systems.
- To bring together resources to help local school districts.
- Solve common problems.
- To stimulate local educational activities and develop new CREC programs which address the student goals of the CT Board of Education.
- To assist Local Boards of Education in providing a continuum of student services and settings which facilitates the education of all children.
- To provide quality direct services to identified students using an array of specialized cooperative, integrated and stand alone settings.
- To improve the quality of staff in CREC and its member districts for the purpose of improving learner achievement.
- To inform CREC membership, governmental bodies and the community at large about the contribution of CREC to the "Educational Enterprise."
- To achieve continued improvement in the conduct of all CREC internal and external services.

Goal

CREC staff and programs shall work with local school systems to meet their needs and the needs of students.

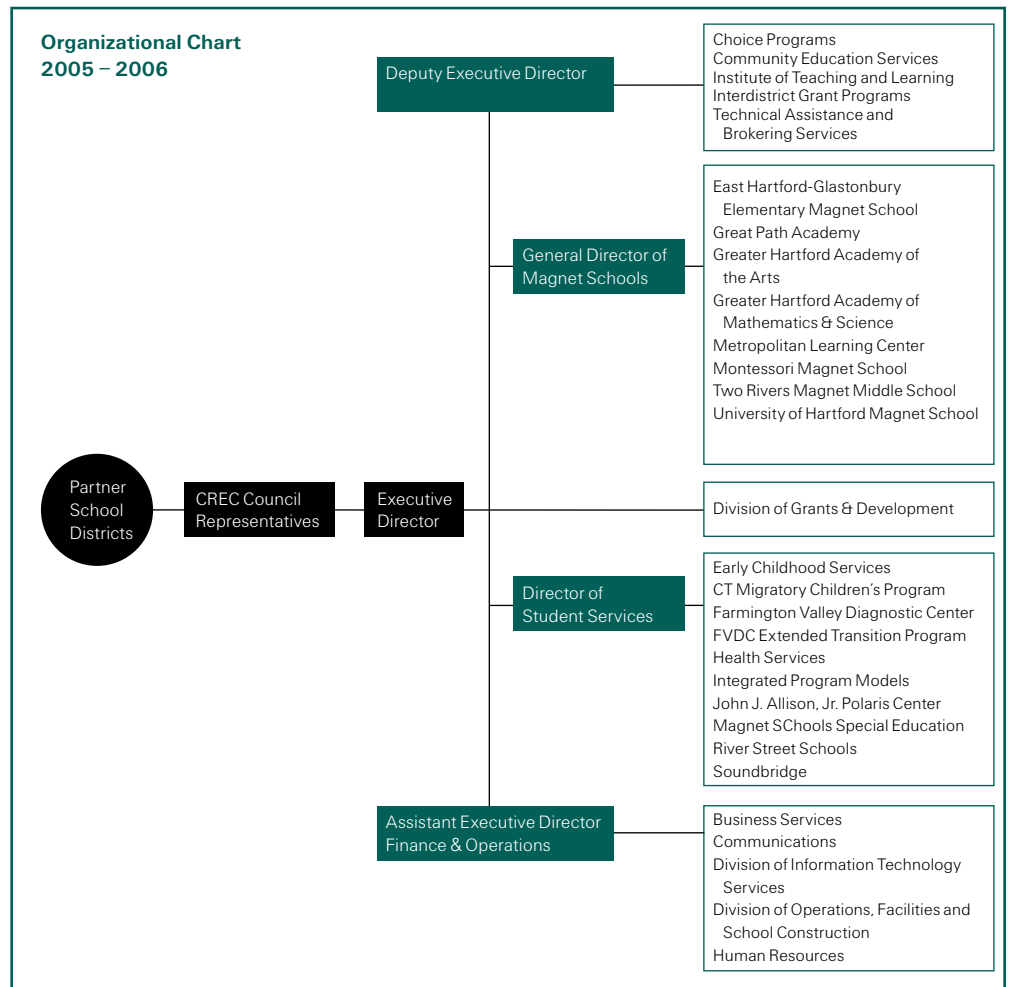
- Each student in the public schools of the Capitol Region will demonstrate learning at ever higher levels.
- Each student in the public schools of the Capitol Region will demonstrate, by the end of grade 3, high levels of literacy.
- Each student in the public schools of the Capitol Region will participate in learning environments that more nearly reflect the diversity of the region's population.

How CREC Assesses Needs and Sets Priorities

CREC has long valued partnership building, listening and probing for understanding, and collaboration as it responds to the needs of its various clients. During 2005 - 2006, CREC continued to rely on feedback from:

- Advisory Committees that helped set program-specific priorities with direct service programs.
- CREC’s Board of Directors and Council, representing Board of Education members from urban, suburban and rural districts, who meet monthly to discuss problems affecting education in our region and encourage CREC to pursue an active role in providing high quality, cost-effective solutions. A Council retreat is held each year to set organizational direction.
- CREC’s Professional Advisory Board, composed of superintendents who offer an administrative perspective of needs assessment.
- State agency needs assessments and planning documents as they reflect the needs of the Capitol Region.
- Strategic Plans of such organizations as the Capitol Region Partnership and its member agencies; the Connecticut State Department of Education Comprehensive Plans, and school district planning documents and Superintendent Reports.
- On-going meetings held with local staff: superintendents (Hartford Area Superintendents’ Association); curriculum directors (Curriculum Council); special education directors (ConnCASE); personnel directors (Human Resources Council), and monthly meetings with the State Education Commissioner.
- CREC, as a charter member of the Capitol Region Partnership, meets monthly with other regional service agencies to determine needs and ways those needs can be met through cooperative efforts.

Information from these and other sources is analyzed and synthesized by the CREC cabinet: the Executive Director, Deputy Executive Director, Assitant Executive Director Finance & Operations, Director of Student Services, and the General Director of Magnet Schools.



2005 – 2006 Governance

Board of Directors

Berlin - John Richards
Bolton - John Hambrook
Canton - Frank Byus - Vice Chair
Enfield - Lynn Scull
Granby - Cal Heminway
Hartford - David MacDonald
Plainville - Becky Tyrrell - Chair
Region 10 - Beth Duffy
Simsbury - Lydia Tedone - Sec. / Treasurer
Southington - Jerry Belanger
West Hartford - Terry Schmitt

Council Representatives

Avon - Dr. Angela Shelton
Berlin - John M. Richards
Bloomfield - Shirley Thompson
Bolton - John Hambrook
Bristol - Christopher C. Wilson
Canton - Frank Byus
Cromwell - Shirley Banic
East Granby - Michaela Rosenberger
East Hartford - Karen S. Howe
East Windsor - Terri Willingham
Ellington - Ann Marie Hayes
Enfield - Joyce P. Hall
Farmington - Mary Grace Reed
Glastonbury - Elizabeth Rogan
Granby - Cal Heminway
Hartford - David McDonald
East Hartland - Amy Bourque
New Britain - Peter Kochol
Newington - Helen W. Nelson
Plainville - Becky Tyrrell
Portland - Honora Kenney
Region 10 - Beth Duffy
Burlington - Peter Turner
Rocky Hill - Charles McMonigle
Simsbury - Lydia Tedone
Somers - Joan Formeister
Southington - Jerry Belanger
Suffield - Lauren Life
Vernon - Amarjit Buttar
West Hartford - Terry Schmitt
Wethersfield - Janis K. Malec
Windsor Locks - Brenda Ives
Windsor - Doreen Richardson

Professional Advisory Board

Avon, Richard Kisiel
Berlin, Michael Cicchetti
Cromwell, Matt Bisceglia
East Granby, Christine Mahoney
East Hartford, Marion Martinez
Enfield, John Gallacher

(Professional Advisory Board continued)

Farmington, Robert Villanova
Hartford, Jacqueline Jacoby
Glastonbury, Alan Bookman
Granby, Gwen Van Dorp
New Britain, Doris Kurtz
New Hartford, Philip O'Reilly
Newington, Ernest Perlini
Plainville, Kathy Binkowski
Portland, Sally Doyen
Region 10, Paula Schwartz
Rocky Hill, Cam Vautour
Southington, Harvey Polansky
South Windsor, Robert Kozaczka
Suffield, John Reynolds
Windsor, Elizabeth Feser
Windsor Locks, Gregory Little

CREC Administration

Bruce E. Douglas, Ph.D.,
Executive Director

Colleen A. Palmer
Deputy Executive Director

Donald P. Walsh,
*Assistant Executive Director for Finance
& Operations*

Joe Townsley
General Director of Magnet Schools

Frances Difiore,
*Assistant Director of Magnet Schools,
Director of Teaching & Learning*

Richard A. Cormier,
Director of Human Resources

Jacqueline L. Wasta,
Director, Student Services

Scott Nierendorf,
*Director of Education Technology
Services*

Mark O'Donnell, Ph.D.,
Director, Grants Division

Linda L. Russell,
*Director, Technical Assistance &
Brokering Services*

Andrew Tyskiewicz,
*Director, Community Education,
Training and Employment Services*

Mary W. Forbes,
Director of Communications

Budget Statement (Fiscal Year Ending June 30, 2006)

PROGRAM	AMOUNT
General Fund Programs	
Executive Director's Office	\$ 272,084
Deputy Exec. Director's Office	285,886
Business Services	2,662,750
Human Resources	732,424
Communication Services	222,265
Student Services	384,866
Teaching and Learning Services	147,327
Grants and Development Office	234,130
The Forum	3,240
Interdistrict Grants Office	233,850
Minority Teacher Recruiting	27,000
Soundbridge	4,401,429
River Street School (RSS)	17,478,950
Integrated Program Models (IPM)	3,853,705
Farmington Valley Diagnostic Center	911,000
Polaris Center	5,567,330
Administrative Cost Center	737,000
Technology Services	139,964
Project Literacy - Reading Recovery	194,500
Technical Assistance & Brokering Services	288,114
Allied Health Career Collaborative	20,000
Learning Corridor Cost Center	3,550,000
Montessori Magnet School	3,388,244
East Hartford / Glastonbury Magnet School	2,344,475
Greater Hartford Academy of Math & Science Magnet School	2,016,393
Metropolitan Learning Center Magnet School	7,465,745
Metropolitan Learning Center Summer Academy	129,000
Greater Hartford Academy of the Arts (GHAA)	3,335,718
GHAA School Magnet Arts Programs	90,128
Center for Creative Youth (CCY)	728,850
University of Hartford Magnet School (UHMS)	5,396,250
Magnet School Cost Center	2,404,190
Hartford Middle School	2,479,577
Two Rivers Magnet Middle School	7,093,191
Great Path Academy	795,689
General Fund	\$ 80,015,264
Special Revenue Fund Programs	
Common Ground	\$ 68,950
We're Making Connecticut History	134,275
Summer Share	24,586
Discovery Center	134,748
CT Youth Forum	94,324
SIFT - Summer Institute for American Politics	129,656
Summer Institute for American Politics	118,200
City Slickers	51,062
Neighborhood Studios	67,138
Kids n Critters	20,000
CREC Leadership Academy	113,472
Exploring Diversity Through Aquaculture	108,350
Summer Institute for Science and Math	125,000
CREC Tech	68,950
4-H Center at Auer Farm	14,775
Choice Summer	153,780
Youth Educator's Society	39,715
Asnuntuck Career Passport Program	41,851
Project PACT	125,335
Teaching American History	343,440
Math/Science Partnership Grants	310,064
Special Services Support Team	850,000
Connecticut Technical High School System Related Services	750,000
REACT - Regional Education Assessment Consultation Team	828,000

PROGRAM	AMOUNT
Special Revenue Fund Programs (continued)	
Title III Consortium	130,162
CT Department of Children and Families	10,000
Board of Education & Services for the Blind Related Services	350,000
CT Technical High Schools Events Management Service	975,000
Summer Youth Employment Program	61,220
Capitol Region Choice Program	3,731,000
School-To-Career / Perkins	463,760
Supplemental Services	105,100
Entitlement Grants	965,793
Connecticut Migratory Children's Program	280,815
Employment & Training Services	610,810
Year Round Suburban Youth	220,600
Preschool Intervention Program	317,795
Early Beginnings	850,215
Hartford School Readiness	8,092,415
Early Intervention Birth to Three Services	1,559,555
Dept. of Corrections - Professional Development	160,000
Community Education	2,258,641
Opening Doors	34,235
Metacomet Ridge Interdistrict Academy	73,875
EQUAL Summer	139,000
Pupil Partners	63,668
Graustein Fund Discovery Grant	74,260
Special Revenue Fund	\$ 26,243,590
Capital Projects Fund Program	
Riverstreet School - 627 Riverstreet	\$ 2,748,163
Polaris Center Construction	16,000
Capital Projects Fund	\$ 2,764,163
Enterprise Fund Programs	
Learning Corridor Theater	\$ 95,000
Cooperative Purchasing	6,450
Regional Fingerprinting Services	70,400
Continuing Education Units (CEU)	7,600
Beginning Educator Support and Training (BEST)	3,000
Property Rental	18,000
Farmington Valley Special Services Directors	10,400
Connecticut Association of School Business Officials (CASBO)	10,000
Conference Services	168,800
Educational Technology Provision of Services	610,000
School Improvement Center	966,150
TABS - General Provision of Services	1,103,500
Adult Training & Development Network of Connecticut	208,418
School Facility Services	376,000
Enterprise Fund	\$ 3,653,718
Internal Service Fund Programs	
CREC Wide Area Network	\$ 1,380,000
Internal Staff Development	90,000
Copy Center	240,000
Internal Service Fund	\$ 1,710,000
GRAND TOTAL	\$ 114,386,735
SUMMARY BY FUND TYPE	
General Fund	\$ 80,015,264
Special Revenue Fund	26,243,590
Capital Projects Fund	2,764,163
Enterprise Fund	3,653,718
Internal Service Fund	1,710,000
TOTAL	\$ 114,386,735

Projected Budget Statement (Fiscal Year Ending June 30, 2007)

PROGRAM	AMOUNT	PROGRAM	AMOUNT
General Fund Programs		Special Revenue Fund Programs (continued)	
Executive Director's Office	\$ 314,159	Special Services Support Team	994,000
Deputy Exec. Director's Office	321,977	Connecticut Technical High School System Related Services	500,000
Business Services	2,786,902	REACT - Regional Educational Assessment Consultation Team	875,000
Human Resources	786,485	CT Department of Children and Families	10,000
Communication Services	227,577	Board of Education & Services for the Blind Related Services	300,000
Student Services	353,151	CT Technical High School Events Management Service	600,000
Teaching and Learning Services	109,708	Summer Youth Employment Program	403,000
Grants and Development Office	246,183	Capitol Region Choice Program	3,894,000
The Forum	3,520	School-To- Career / Perkins	313,750
Interdistrict Grants Office	146,825	Supplemental Services	128,100
Minority Teacher Recruiting	27,000	Connecticut Migratory Children's Program	65,715
Soundbridge	4,302,925	Employment & Training Services	592,260
River Street School (RSS)	19,179,150	Preschool Intervention Program	313,350
Integrated Program Models (IPM)	4,147,550	Early Beginnings	1,470,380
Farmington Valley Diagnostic Center	917,860	Early Intervention Birth to Three Services	1,602,725
Polaris Center	6,562,140	Dept. of Corrections - Professional Development	150,000
Administrative Cost Center	915,950	Community Education	2,015,755
Coltsville Facility	1,019,500	Metacomet Ridge Interdistrict Academy	68,705
Technical Assistance & Brokering Services	296,981	EQUAL Summer	97,975
Allied Health Career Collaborative	20,000	Pupil Partners	74,455
Learning Corridor Cost Center	3,726,000	Graustein Fund Discovery Grant	23,900
Montessori Magnet School	3,606,354	Special Revenue Fund	\$ 16,303,244
East Hartford / Glastonbury Magnet School	2,491,924	Enterprise Fund Programs	
Greater Hartford Academy of Math & Science Magnet School	2,081,337	Montessori Training Center	\$ 133,000
Metropolitan Learning Center Magnet School	7,766,109	Learning Corridor Theater	95,275
Greater Hartford Academy of the Arts (GHAA)	3,585,015	Cooperative Purchasing	5,150
GHAA School Magnet Arts Programs	83,820	Regional Fingerprinting Services	70,848
Center for Creative Youth (CCY)	816,500	Continuing Education Units (CEU)	10,174
University of Hartford Magnet School (UHMS)	5,704,652	Beginning Educator Support and Training (BEST)	3,100
Magnet School Cost Center	2,404,190	Connecticut Association of School Business Officials (CASBO)	13,594
Hartford Middle School	3,082,000	Conference Services	170,146
Two Rivers Magnet Middle School	7,732,994	Educational Technology Provision of Services	712,000
Great Path Academy	948,919	School Improvement Center	816,600
General Fund	\$ 84,311,167	TABS - General Provision of Services	229,000
Special Revenue Fund Programs		Adult Training & Development Network of Connecticut	226,630
Common Ground	\$ 64,439	School Facility Services	292,775
We're Making Connecticut History	124,875	Enterprise Fund	\$ 2,778,292
Summer Share	22,978	Internal Service Fund Programs	
Discovery Center	125,933	CREC Wide Area Network	\$ 1,222,046
CT Youth Forum	88,153	Internal Staff Development	90,000
SIFT - Summer Institute for American Politics	127,655	Copy Center	224,634
Summer Institute for American Politics	109,925	Internal Service Fund	\$ 1,536,680
City Slickers	47,490		
Neighborhood Studios	62,746	GRAND TOTAL	\$ 104,929,383
Kids n Critters	18,692	SUMMARY BY FUND TYPE	
CREC Leadership Academy	105,530	General Fund	\$ 84,311,167
Exploring Diversity Through Aquaculture	100,765	Special Revenue Fund	16,303,244
Summer Institute for Science and Math	101,010	Enterprise Fund	2,778,292
CREC Tech	64,125	Internal Service Fund	1,536,680
4-H Center at Auer Farm	13,808		
Choice Summer	159,250	TOTAL	\$ 104,929,383
Youth Educator's Society	36,935		
Project PACT	112,075		
Teaching American History	320,790		

Service Matrix 2005-2006

Administrative Services

	Avon	Berlin	Bloomfield	Bolton	Bristol	Canton	Cromwell	East Granby	East Hartford	East Windsor	Ellington	Enfield	Farmington	Glastonbury	Granby	Hartford	Hartland	Manchester	New Britain	New Hartford	Newington	Plainville	Portland	Region #10	Rocky Hill	Simsbury	Somers	Southington	South Windsor	Surfield	Vernon	West Hartford	Wethersfield	Windsor	Windsor Locks									
EXECUTIVE DIRECTOR- SPECIAL PROJECTS																																												
ED 539 Data Collection	•	•	•	•	•	•	•	•	•	•	•	•	•	•	•	•	•	•	•	•	•	•	•	•	•	•	•	•	•	•	•	•	•	•	•	•	•							
CT Academy/Educational Leaders	•	•	•	•	•	•	•	•	•	•	•	•	•	•	•	•	•	•	•	•	•	•	•	•	•	•	•	•	•	•	•	•	•	•	•	•	•	•						
CT Assn/Public Schools Supts (CAPSS)	•	•	•	•	•	•	•	•	•	•	•	•	•	•	•	•	•	•	•	•	•	•	•	•	•	•	•	•	•	•	•	•	•	•	•	•	•	•						
Hartford Area Supts Assn (HASA)	•	•	•	•	•	•	•	•	•	•	•	•	•	•	•	•	•	•	•	•	•	•	•	•	•	•	•	•	•	•	•	•	•	•	•	•	•	•						
CREC GOVERNANCE																																												
Board of Directors	•	•	•	•	•	•	•	•	•	•	•	•	•	•	•	•	•	•	•	•	•	•	•	•	•	•	•	•	•	•	•	•	•	•	•	•	•	•						
Council	•	•	•	•	•	•	•	•	•	•	•	•	•	•	•	•	•	•	•	•	•	•	•	•	•	•	•	•	•	•	•	•	•	•	•	•	•	•	•	•				
Professional Advisory Board	•	•	•	•	•	•	•	•	•	•	•	•	•	•	•	•	•	•	•	•	•	•	•	•	•	•	•	•	•	•	•	•	•	•	•	•	•	•	•	•				
Assistant Executive Director	•	•	•	•	•	•	•	•	•	•	•	•	•	•	•	•	•	•	•	•	•	•	•	•	•	•	•	•	•	•	•	•	•	•	•	•	•	•	•	•				
ADMINISTRATIVE SERVICES																																												
Conference Center	•	•	•	•	•	•	•	•	•	•	•	•	•	•	•	•	•	•	•	•	•	•	•	•	•	•	•	•	•	•	•	•	•	•	•	•	•	•	•	•				
Cooperative Purchasing	•	•	•	•	•	•	•	•	•	•	•	•	•	•	•	•	•	•	•	•	•	•	•	•	•	•	•	•	•	•	•	•	•	•	•	•	•	•	•	•	•			
Communications Services	•	•	•	•	•	•	•	•	•	•	•	•	•	•	•	•	•	•	•	•	•	•	•	•	•	•	•	•	•	•	•	•	•	•	•	•	•	•	•	•	•	•		
Grant Writing Services	•	•	•	•	•	•	•	•	•	•	•	•	•	•	•	•	•	•	•	•	•	•	•	•	•	•	•	•	•	•	•	•	•	•	•	•	•	•	•	•	•	•		
PERSONNEL SERVICES																																												
Fingerprinting	•	•	•	•	•	•	•	•	•	•	•	•	•	•	•	•	•	•	•	•	•	•	•	•	•	•	•	•	•	•	•	•	•	•	•	•	•	•	•	•	•	•		
Human Resources Council	•	•	•	•	•	•	•	•	•	•	•	•	•	•	•	•	•	•	•	•	•	•	•	•	•	•	•	•	•	•	•	•	•	•	•	•	•	•	•	•	•	•	•	
Admin Support Roundtable	•	•	•	•	•	•	•	•	•	•	•	•	•	•	•	•	•	•	•	•	•	•	•	•	•	•	•	•	•	•	•	•	•	•	•	•	•	•	•	•	•	•	•	•

Service Matrix 2005-2006

Division of Community Education, Training & Employment Services

	Avon	Berlin	Bloomfield	Bolton	Bristol	Canton	Cromwell	East Granby	East Hartford	East Windsor	Ellington	Enfield	Farmington	Glastonbury	Granby	Hartford	Hartland	Manchester	New Britain	New Hartford	Newington	Plainville	Portland	Region #10	Rocky Hill	Simsbury	Somers	South Windsor	Stafford	Vernon	West Hartford	Wethersfield	Windsor	Windsor Locks	
Adult Basic Education			9		1				11	1					1	90		4	11					2	1					12	1	11	1		
Adult Training/Development Network		6	9		20			10				9	3		4	87			11			5				2	1			32	20	2	11	8	
Bridges to Health Care Careers			3		1				4	1						27		1												1		9			
CT Works	1	4	26	2	75	1		3	83	6	10	75	4	6	7	289		53	176		17	9	2	5	7	6	16	4	16	15	26	6	42	10	
Even Start - UHA			2													31														3					
Family Literacy and Development	2	6			5	2	2	2	17	11	1	16	10	1	1	113		21	21		4	7	1		1		1	1	8	26	2	170	2		
PACT Grant	705			208		350		465																740	460									806	
School to Career	6	4	5	5	6		4	2	10	3	4	14	5	9	3	34		8	7	3	5	3	3	4	3	5	6	4	2	3	8	3	10	4	
Teaching American History			1	3				21										6				2								7	11				
Transition to Employment			1		1		1		19	6	1	1	1	1		228		1	7	4	4			2							21	3	2		
Youth Programs			22					24				13		11	45		16			22							14		16	20		19			

Service Matrix 2005-2006

Technical Assistance & Brokering Services

	Avon	Berlin	Bloomfield	Bolton	Bristol	Canton	Cromwell	East Granby	East Hartford	East Windsor	Ellington	Enfield	Farmington	Glastonbury	Granby	Hartford	Hartland	Manchester	New Britain	New Hartford	Newington	Plainville	Portland	Region #10	Rocky Hill	Simsbury	Somers	Southington	South Windsor	Suffield	Vernon	West Hartford	Wethersfield	Windsor	Windsor Locks	
Brokering/Tech Assistance	182	121	20		201	24	39	845	66	105	40	47	90	3588	124	130	73	15								60	1	215	5	28	2	21	385	37		
Events Mgmt. - Beyond Tech Conf.	1	2	3	39				1	4	9		1	1		1				1						2	3	3	1				2	6			
Virtual High School									11										12						12	17	11	4	1			9	26			
Asst. Principal Round Table	7	4	4	1				2				1	2	6							4	1				2						2				
Title III Consortium	1	6	6	2					1	2	1	4	1										1		5	11	1	1	1					5		
Teacher & Leader Training	15	11	3	1	13	1	2	45	2	5	19	2	3	9	190	8	6	8	6	6	6	4	10	5	12	5	12	2	2	1	1	20	2			
Tech Times Workshops			1	3	1	3	1	3	2	3	2	2	15						1	2	2	2	3	5	4	4	5	38	9	4	2	8	2	3		
Customized On-Site Tech Training	9	74	18	32	377	6	45	5	8	19	34	6	10	81	12	1	33	34	4	4	4	4	41	1	42	13	16	250	5	120	208	27	7	5		
Learner's Edge Study Skills Training	1					13		1	3			1	1	1	1	1	1	1	1	25						3	24			1	6	1	1			
Instructional Coaches Academy	1					1	1	2					3	28										3			2	1				1				

Service Matrix 2005-2006

Institute of Teaching and Learning

	Avon	Berlin	Bloomfield	Bolton	Bristol	Canton	Cromwell	East Granby	East Hartford	East Windsor	Ellington	Enfield	Farmington	Glastonbury	Granby	Hartford	Hartland	Manchester	New Britain	New Hartford	Newington	Plainville	Portland	Region #10	Rocky Hill	Simsbury	Somers	Southington	South Windsor	Suffield	Vernon	West Hartford	Wethersfield	Windsor	Windsor Locks		
Classroom Walk-Through Training	3	2					6		6				4	1					1	1	4		1										8				
Standards based Report Cards Level 1	1	3						2	1			3	1					3					1		3						1		1				
Standards based Report Cards Level 2								6										3																			
Book Club PM	1	4													27											1		2					2				
Book Club AM					9				1					16			2				1				2	2				2		1					
UjD Nov. 2005 English / Social Studies						7																										1	1				
UjD Fe. 2006 Workshops								1																								4	1				
UjD Summer July 27-29, 2005																																					

Service Matrix 2005-2006

Division of Student Services

	Avon	Berlin	Bloomfield	Bolton	Bristol	Canton	Cromwell	East Granby	East Hartford	East Windsor	Ellington	Enfield	Farmington	Glastonbury	Granby	Hartford	Hartland	Manchester	New Britain	New Hartford	Newington	Plainville	Portland	Region #10	Rocky Hill	Simsbury	Somers	Southington	South Windsor	Surfield	Vernon	West Hartford	Wethersfield	Windsor	Windsor Locks			
EARLY CHILDHOOD SERVICES																																						
Birth to Three Services	19	19	3	2	44			9	2	8	6	38	15	23	28	135		26	53		17	13			5	36	10	33	19	11	17	24	12	29	5			
Migratory Children's Program															418		69																					
Parent Aide Program															98																							
Preschool Intervention Prog (PIP)															61																							
FARMINGTON VALLEY DIAGNOSTIC CTR.	9					1	1	1				8	8	4							3	5	6	8														
POLARIS CENTER		3	2	2	4			5	4				1	1	1	35	9	12		3	1							1	2		3	3	1	1	3			
RIVER STREET SCHOOL																																						
Day Program		2	5		2	2	2	1	1	1	1	6	1	3		3		2	2	1	2	2				2	2	2	4	1	1	6	5	2	8	3		
Extended Day Program			2	1						1							1									2	2	1	1	1	1	4			4			
Special Education Summer School		2	5		3			1	1	1	5	1	3	3		3	4	2		2	2				2	2	3	4	1	3	14	5	2	7	4			
Integrated Program Models (IPM)		1													1							4			2	1												
Autism Program at Coltsville	1	1	1			1	1	1	2				4				2			2																		
SOUNDBRIDGE	2	7	10	2	29		6	2	14	6	8	3	11	22		35	18	6	1	9	4	7	3	6	20	6	21	35	7	1	1	25	10	3				

Service Matrix 2005-2006

Division of Choice Programs

	Avon	Berlin	Bloomfield	Bolton	Bristol	Canton	Cromwell	East Granby	East Hartford	East Windsor	Ellington	Enfield	Farmington	Glastonbury	Granby	Hartford	Manchester	New Britain	New Hartford	Newington	Plainville	Portland	Region #10	Rocky Hill	Simsbury	Somers	South Windsor	Surfield	Vernon	West Hartford	Wethersfield	Windsor	Windsor Locks						
INTERDISTRICT PROGRAMS																																							
4-H Farm Summer Program						18										29									7														
Center for Creative Youth		1						1				2	5	5		5		1			2	2	1	2				1	4			1							
Choice Summer Academy	9			5	5	6	6	3		13	4	14	12	4	5					7	8			7	19	3	15	3	4	12			72	7					
City Slickers					27											60		6								1													
Common Ground		10							6				5	5	15					13				5								11	6	6					
CREC Tech Summer Academy	1	2	2						2		2		1	1	14	1	2										3	2	6	4	5								
CRILA	1	1	1			5	1	2	2	3		3	3	3	6	1	1			3	2	3	3	1	3	3	1	4	1	5	2								
CT Youth Forum	34	1	14	12			20		14		1	15	1	15	79	34	16			1	24			22	6									22	1	7			
EQUAL	2	13							14		1	2	2	2	20	6	1			2						3	3	2	29	1									
EDA		12	1					2							6																				1				
Two Rivers Summer Academy		31							29	7	3	6	6	6	63	14											7								23	3			
Kids 'n Citters								54		48																										96			
Looking in Teen Theater	1	1				4			1			2	4	8	8				1					2	2	1			1	5	1						2		
Metacomet Ridge IA		42					1				41	22					184									38	43											43	
Neighborhood Studios	1	3	1			3			5		3	3	3	3	74	1			1					3	1		2		11	1	7								
Pupil Partners	22	178	20		25	10	76	158		36	44	36	20	333		155	35	22	40				25			60	15		109	76									
Institute for American Politics			1	2							1						1						1			1		1	1	1	3								
Inst. for Science & Math												2	1	1	1										1				1	3									
Summer Musical Theater	1	4			1				3	1	2	5	4	1	7			1	1				5	2	5	3	1	4	1	4	2								
SummerShare															20														24										
Institute for Future Teachers			2									2	1	1	1						1					1		3	1	4							4		
The Discovery Center										128	185				300	98																					17		
We're Making Connecticut History												87			254									86														128	55
Young Educators' Society					55			30	5				9	135		20	13			20				8			20		10	30									

Service Matrix 2005-2006

Division of Choice Programs (continued)

	Avon	Berlin	Bloomfield	Bolton	Bristol	Canton	Cromwell	East Granby	East Hartford	East Windsor	Ellington	Enfield	Farmington	Glastonbury	Granby	Hartford	Hartland	Manchester	New Britain	New Hartford	Newington	Plainville	Portland	Region #10	Rocky Hill	Simsbury	Somers	Southington	South Windsor	Surfield	Vernon	West Hartford	Wethersfield	Windsor	Windsor Locks		
MAGNET SCHOOLS																																					
E. Hartford/Glastonbury Magnet								135					113																								
Gr. Hartford Academy of the Arts	3	3	3	5	2	12	2	2	7	1	5	5	4	23	5	49		10	16		14	1	5		22	20	10	7	6	3	18	15	12	8			
GH Academy Math/Science	3	9			1						9	7	2	2	6	51	18	14		8					21	8	4	3	2	2	8	7					
Great Path Academy				4				22		5			12		14	14	15																				
Metropolitan Learning Center		139							39	39						188																		200	60		
Montessori Magnet School		1	33				2	22	2		2				157	147	14	7		4	4	1	1	4			1	2		9	12	45	1				
Two Rivers Magnet Middle School								136					76		134	138											86										
U of Hartford Magnet School	30	13										20			203										37		2			42	28						
Polaris Center		1	2	1	2			1	5					1	1	21		4	8			1							2	3	1	1	3				
OTHER INITIATIVES																																					
Capitol Region Choice Program	36	9		17	54	43	34	25		49	11	74	88	39	29	10			3		57	59			7	45	90	13	9	59	20	41	51	14	14	25	
CREC Minority Teacher Recruiting	•	•	•		•	•	•	•		•		•	•	•	•	•		•	•	•	•	•	•	•	•	•	•	•	•	•	•	•	•	•	•	•	•

Regional Collaboration

CREC is grateful for the involvement of the following organizations in supporting the work of CREC during 2003 - 2004

Legislative:

Connecticut General Assembly

Funding Agencies:

Aetna Foundation, Inc.
AT&T Foundation
The Josef and Anni Albers Foundation
The Barnes Foundation
Carl Perkins Grant Program
Capitol Region Workforce Development Board
Center for Creative Youth Parent's Fund
Citigroup Foundation, Inc.
Community Renewal Team
CT Center for School Change
CT Commission on the Arts
CT Humanities Council
Dexter Cooperation
John W. Dorr Foundation
The Ensworth Charitable Foundation
Episcopal Diocese of CT
Ericsson Foundation
Fisher Foundation, Inc.
The George A. and Grace L. Long Foundation
The William Caspar Graustein Memorial Foundation
John W. Dorr Foundation
Greater Hartford Arts Council
Ellen Jeane Goldfarb Memorial Fund
Hartford Courant Foundation, Inc.
The Hartford Foundation for Public Giving
The Hartford Insurance Group Foundation
The Jon B. Higgins Scholarship in Jazz
The Knox Foundation
The Kreitler Foundation
The David T. Langrock Foundation
Locitte Foundation
Mass Mutual Foundation
MetroHartford Chamber of Commerce
The Musical Club of Hartford, Inc. - Evelyn Bonar
Storrs Scholarship Fund
The Napier Foundation
National Science Foundation
New Britain Foundation for Public Giving
New Britain Housing Authority
Northeast Utilities Foundation
Riverfront Recapture
Roberts Foundation
Singer Memorial Scholarship
Tunxis Community College
UCONN Foundation, Inc.
Vance Foundation
Arthur Vining Foundation
Waterbury Foundation

Business:

ALSTROM Power
CIGNA
CISCO
CT Business & Industry Assn. (CBIA)
Educational Resources
Fleet Bank
Hartford Life
Hewlett Packard/Flo Tech
IBM
Imagineers
JDS Uniphase
Lucent Technologies
PCC Technology
McLaughlin & Associates
Microsoft
Mohegan Sun
Northeast Utilities/CL&P
Pratt & Whitney
Radio Station 93.7 FM
United Technologies
Toshiba
Webster Bank

Labor:

CT Business & Industry Association
CT Education Association
CT Federation of Teachers
New England Health Care Employees
Union Local 1199

Arts/Cultural Organizations:

Bushnell
Greater Hartford Arts Council
Hill-Stead Museum
Sunken Garden Poetry Festival
Trinity College Austin Arts Center
Wadsworth Atheneum

Community/Human Service/ Education Organizations:

Accent, Inc.
Alexander Graham Bell Assn.
American Red Cross
American School for the Deaf
Birth to Three Family Service Coordination Centers
Casey Family Services
Children's Center, Hamden
Church of the Good Shepherd
CT Public Television (CPTV)
Community Solutions
Co-Opportunity, Inc./Youthbuild
CT Audubon Society
CT Charts a Course
CT Distance Learning Assn.
CT Migrant Health Network
CT Science Center
Drugs Don't Work
Early Childhood Training & Resource Academy
East Hartford YWCA
Educational Resource Collaborative of NCC
Equestriades
Even Start
Family Resource Centers
Fidelco
Foodshare
Greater Hartford Literacy Coalition
HARC Steppingstones
Hartford Area Child Care Collaborative
Head Start
Interval House
Klingberg Family Center
Learning Corridor Corporation
Literacy Volunteers of America
Mental Health Assn. of CT
National and CT Puerto Rican Forums
New Britain Family Resource Center
New Britain School Readiness Program
New Britain YWCA
New York League for the Hard of Hearing
North American Family Institute
Oak Hill School for the Blind
One-Stop Career Centers
Padres Abriendo Puertas (Parents Opening Doors)
Parent Aide Coalition
Parents As Teachers
Project Interact, Inc.
Salvation Army
Spanish Speaking Center
The Bridge
The Science Museum of CT
Trust House
Urban League
Village for Families & Children
Workforce Development Bds. of CT

Hospitals/Healthcare:

Burgdorf Clinic
Community Health Services
Center for Multicultural Psychological Services
Children's Home of Cromwell
CT Children's Medical Center
CT Institute for the Blind/Oak Hill
Greater Hartford Easter Seal Rehab Center
Hartford Behavioral Health Council
Hartford Community Healthcare
Hartford Hospital
Hartford VNA
Hispanic Health Council
Hospital for Special Care
Institute of Living
Lenox Hill Hospital, NY
Manchester Memorial Hospital
Manhattan Eye & Ear Hospital, NY
Natchaug Hospital
New Britain General Hospital
New Britain Systems of Care
New England Home Care
St. Francis/Mt. Sinai Hospital
UConn Health Center
UConn Speech & Hearing Clinic
Wheeler Clinic
Workers Comp. Rehab
Yale New Haven Hospital

State Agencies:

CT Board of Education & Services for the Blind
CT Bureau of Rehabilitation Services
CT Commission on the Arts
CT Commission on Children
CT Commission on Deaf and Hearing Impaired
CT Cooperative Extension
CT Departments of:
· Children & Families
· Corrections
· Education
· Environmental Protection
· Labor
· Mental Retardation
· Public Health & Addiction Services
· Social Services
CT Husky Health Care
CT Vocational Technical Schools
Governor's Coalition for Young Children

Higher Education:

State Board of Higher Education
Bureau of Voc-Tech Schools
CT State University System:
· Central CT State University
· Eastern CT State University
Community Technical Colleges:
· Asnuntuck
· Capital
· Charter Oak College
· Manchester
· Tunxis
Quinnipiac University
Sacred Heart University
St. Joseph College
Trinity College
University of Connecticut
University of Hartford/Hartford College for Women
Wesleyan University
Yale University

Professional Associations:

Accreditation Facilitation Project
American Assn. of Adult & Continuing Education
American Assn. of School Administrators
American Society of Training & Development
CT Academy of Educational Leaders
CT Assn. of Adult & Continuing Education
CT Assn. of Boards of Education (CABE)
CT Assn. for Children With Learning Disabilities
CT Assn. for the Education of Young Children
CT Child Care Training Academy
CT Assn. of Public School Superintendents
CT Assn. of School Business Officials
CT Assn. of School Personnel Administrators
CT Assn. of Secondary Schools
CT Council of Administrators of Special Education
CT Principals' Academy
CT Quality Council
CT School Public Relations Assn.
Hartford Area Superintendents Assn.
International Assn. of Psychosocial Rehab Services
National and CT Assns. for the Education of
· Young Children (NAEYC and CAEYC)
Northeast Educational Research Assn.
Special Education Resource Center

Regional Agencies:

Capitol Region Partnership:
· Capital Region Workforce Development Bd.
· Capitol Region Council of Governments
· Greater Hartford Arts Council
· Greater Hartford Transit District
· Hartford Consortium for Higher Education
· Hartford Foundation for Public Giving
· Metropolitan District Commission
· MetroHartford Regional Economic Alliance
· United Way of the Capital Area
Capital Area Substance Abuse Council
Catholic Family Services
CT Puerto Rican Forum
Greater Hartford Legal Aid
Hartford Area Child Care Collaborative
Infoline & Birth-to-Three Infoline
Leadership Greater Hartford
New England Regional Literacy Resource Center
Regional Laboratory for Educational
· Improvement of the Northeast & Islands
Riverfront Recapture
SINA (Southend Institutions Neighborhood Alliance)

Hartford Agencies /Organizations:

City of Hartford
Coalition to Strengthen Sheldon/Charter Oak
· Neighborhood (CSS/CON)
Community Renewal Team
Hartford Multicultural Center
Hartford Youth Peace Initiative

Federal Agencies:

Environmental Protection Agency
U.S. Dept. of Education
U.S. Dept. of Housing & Urban Development
National Aeronautics & Space Administration

Regional Service Centers:

CREC is one of six Regional Educational Service Centers (RESCs) in Connecticut. Membership in one RESC enables a district to access the programs and services from other RESCs if those services are not available within their region. CREC works with Area Cooperative Educational Services; Cooperative Educational Services; EASTCONN; LEARN, and Education Connection to provide services to virtually every public school district in Connecticut.

When districts connect great things happen



Capitol Region Education Council

CREC Central Offices
111 Charter Oak Avenue
Hartford, Connecticut 06106
(860) 247-CREC/2732
Fax (860) 246-3304
Visit us at: www.crec.org